

# The Manitoba Metis Federation

## Manitoba Metis Lake Winnipeg Basin Community Based Monitoring Program

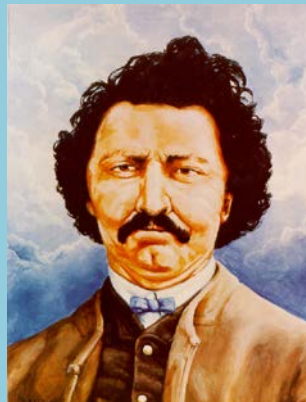
### Lake Winnipeg Basin Program Symposium

March 21, 2019  
Winnipeg, Manitoba



# Presentation Overview:

1. Who are the Metis?
2. The Manitoba Metis Federation
3. Why Water Conservation is Important to the MMF
4. Why the MMF are Important for Water Conservation
5. MMF Water Conservation & Community-based Monitoring
6. Questions and Answers



# Who Are the Metis?



# One of Canada's Three Rights Holding Aboriginal Peoples

## 1982 Canadian Constitution Section 35 :

(1) The existing treaty and aboriginal rights of the aboriginal peoples of Canada are hereby recognized and affirmed;"

(2) In this Act, the 'aboriginal peoples of Canada' includes Indian, Inuit, and **Metis** peoples;



# The Manitoba Metis Federation



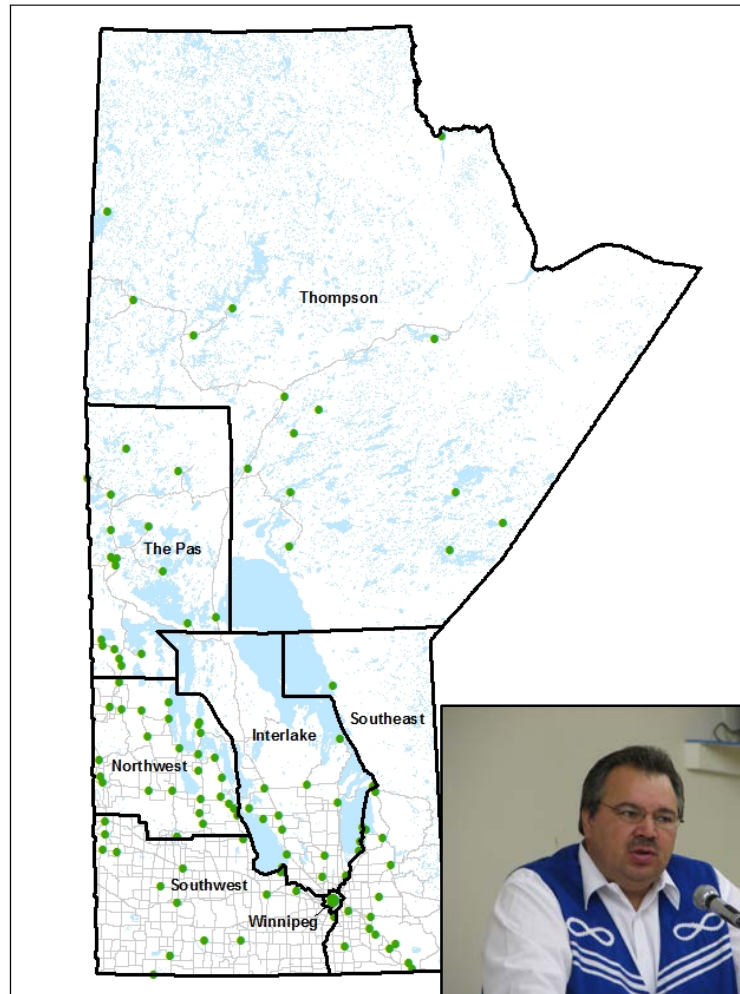
## Objectives:

1. To promote and instill pride in the history and culture of the Metis people.
2. To educate members with respect to their legal, political, social and other rights.
3. To promote the participation and representation of the Metis people in key political and economic bodies and organizations.
4. To promote the political, legal, social and economic interests and rights of its members.
5. To provide responsible and accountable governance on behalf of the Manitoba Metis community using the constitutional authorities delegated by its members.



# The Manitoba Metis Federation

- MMF as the official representative of the Manitoba Metis Community
- Education, training, employment, health, housing, harvesting, consultation, citizenship...
- Governance Structure:
  - 7 Regions
  - 140 Locals
  - 23 Member Cabinet
    - President
    - Vice Presidents
    - Ministers
    - Infinity Women



# Why Water Conservation is Important to the MMF

- The Metis have a historically strong connection to the land and natural resources
- To protect Metis Rights it is necessary to address environmental concerns
- Fishing as a last surviving traditional economic and sustenance activity
- Phosphorus loading is directly affecting water resources and fish populations



# Why MMF Are Important to Water Conservation

- Traditional knowledge is being recognized more and more
- By combining Science and Traditional Knowledge we can work towards holistic solutions to environmental issues
- Unique Metis perspectives and systems
- Large population, including many rural citizens closely connected to water
- Access to Manitoba Metis Community workforce, knowledge, views, and concerns



# MMF Water Conservation & Community-based Monitoring Work

- Long history of water conservation work
  - Fish rearing ponds
  - Rehabilitation through beaver dam removal
  - Aquatic invasive species
- Metis Community-based Climate Monitoring Program
- Metis Guardians Program



# Working Together on Environmental Management

- Importance of partnerships for conservation work, including:
  - Discussion of Joint Approaches;
  - Training, Recruitment & Employment;
  - Identify how Locals and Region can contribute to Water Quality Management;
  - Community Projects & Trusts; and,
  - Conservation Projects and Funds.
- MMF Partnering with Lake Winnipeg Foundation



# Manitoba Metis Lake Winnipeg Basin Community Based Monitoring Program

- Funds accessed through Environment Canada's Lake Winnipeg Basin Program
- Working in partnership with the Lake Winnipeg Foundation
- Metis Citizen Scientist water sampling
- Hired staff to facilitate work
- Traditional Knowledge Study through interviews and community meetings



LAKE  
WINNIPEG  
FOUNDATION



# Thank You – Questions?

