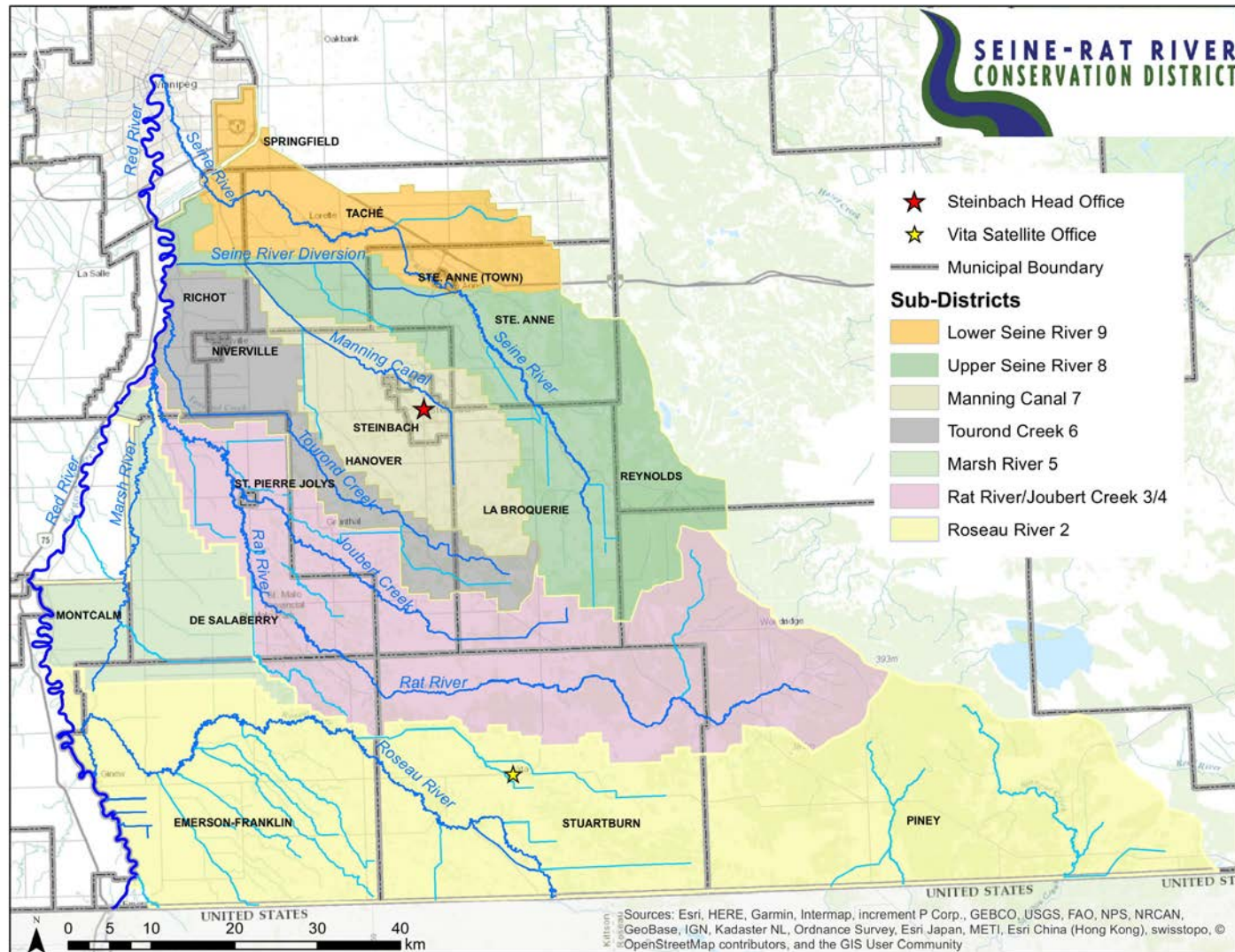


SEINE RAT RIVER CONSERVATION DISTRICT

Jodi Goerzen, SRRCD Manager
Lake Winnipeg Basin Symposium
March 21, 2019

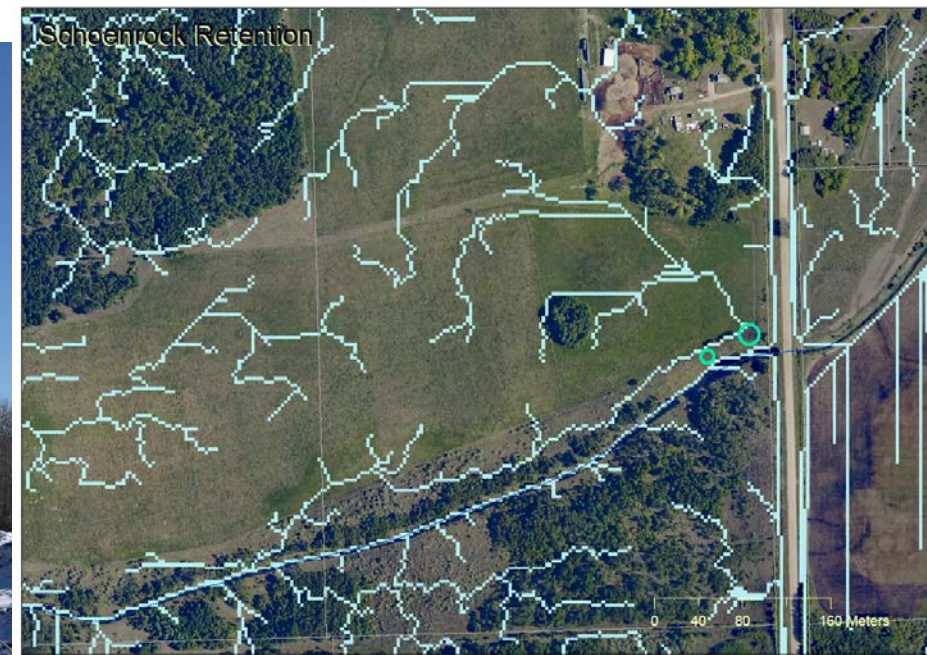


NUTRIENT REDUCTION THROUGH MAPPED & MANAGED WATER RETENTION



- High nutrient contribution from Seine, Rat, Roseau Watersheds to the Red River and Lake Winnipeg
- Targeting hot spots to reduce overland flooding and runoff
- Strategically implementing operational nutrient reduction strategies, now and into the future
- Demonstrating effectiveness of water retention with landowners, NGOs, Municipalities

KISMET CREEK ANIMAL SANCTUARY

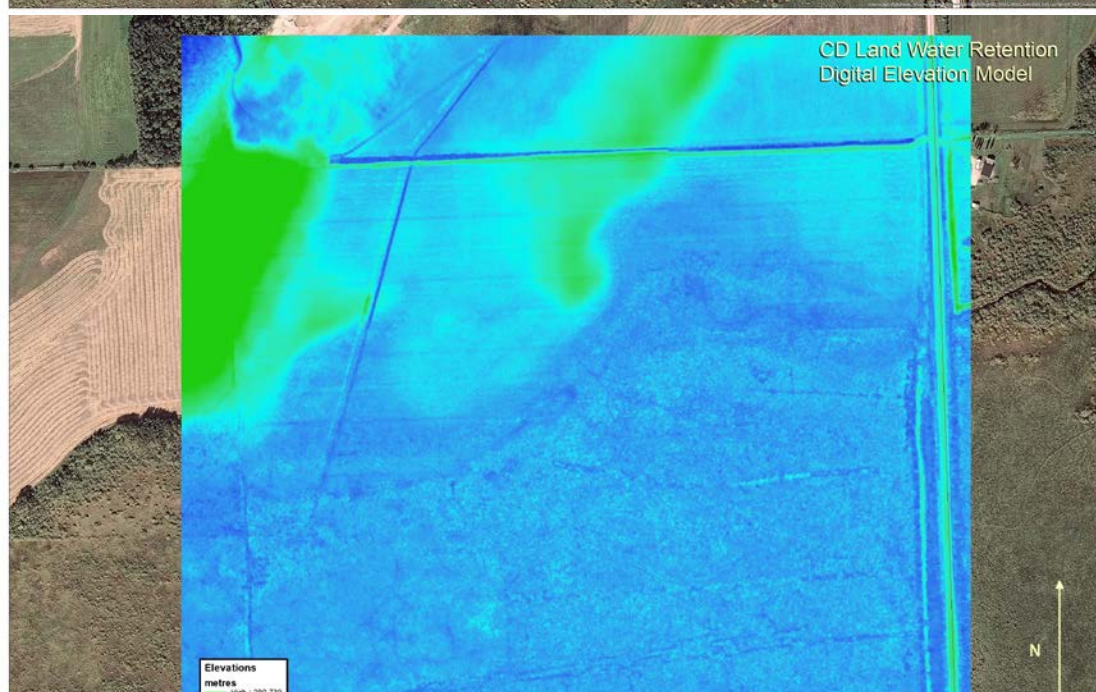
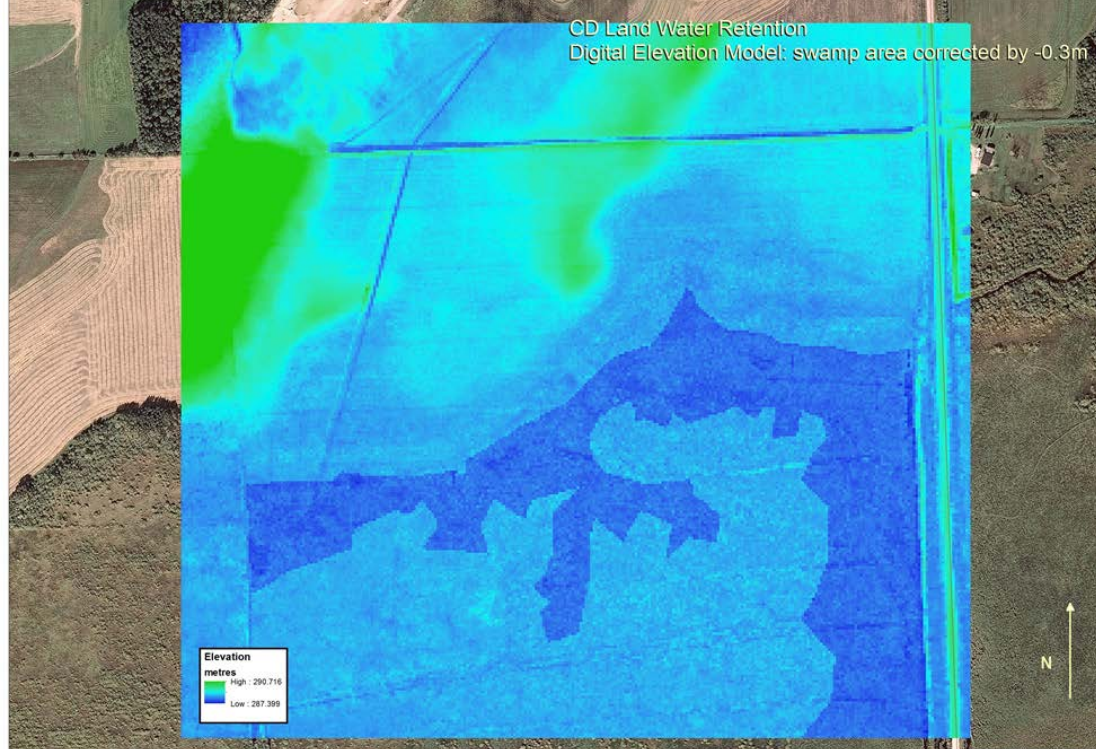


TRUCKS UNLIMITED



HERSCHFELD

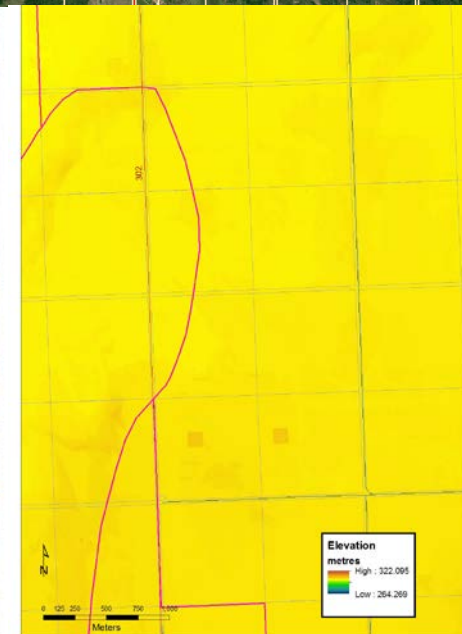
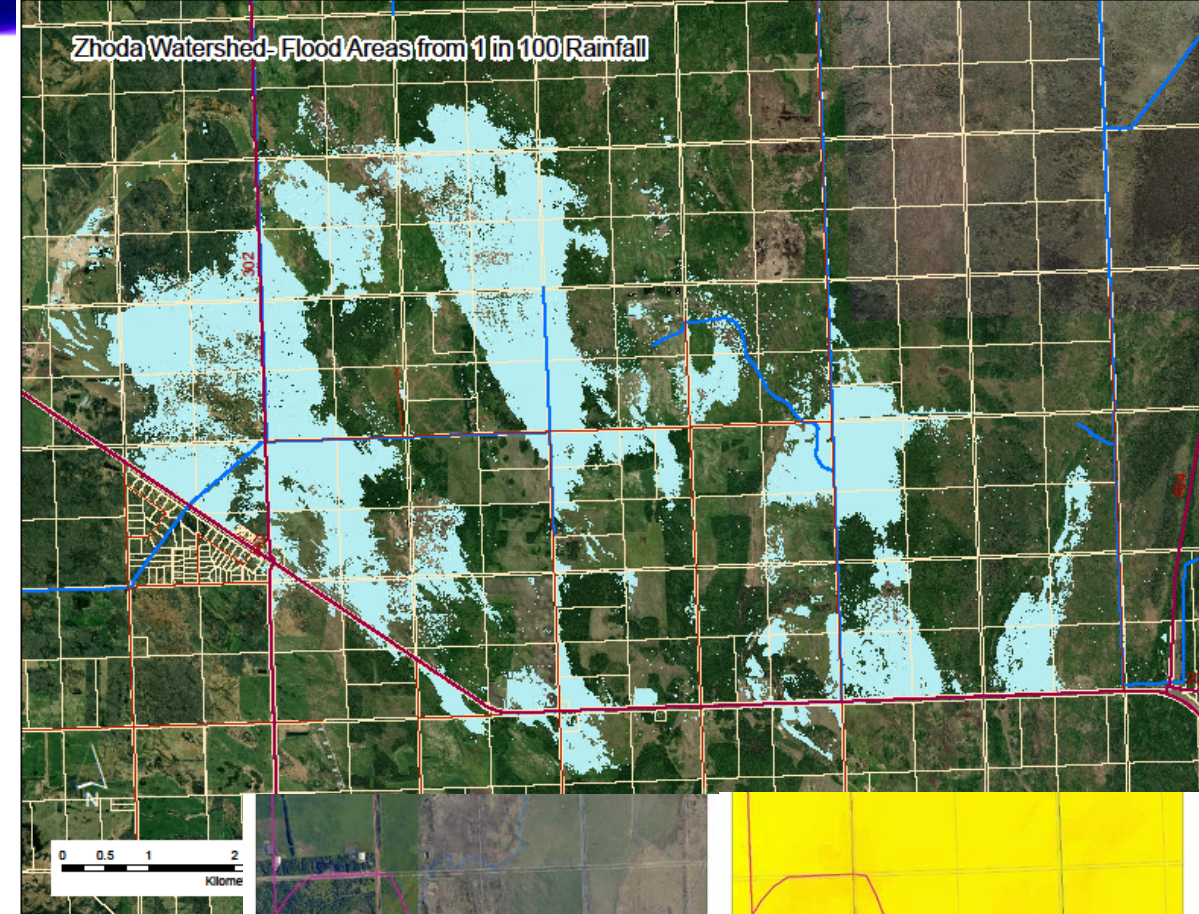




MAPPING

Resources

- LiDAR
- Wetland DEM
- Pond Modeler



WETLAND CHALLENGES LANDOWNER CHALLENGES



NEXT STEPS

Harvest cattail with the International Institute for Sustainable Development
 Monitor water with the Lake Winnipeg Foundation
 Delegate to all our Municipal partners
 Continually plan, implement and demonstrate the effectiveness of properly managed surface water

WWW.SRRCD.CA

